

ESSENTIAL

MARVIN ESSENTIAL™ COLLECTION



THE MARVIN PORTFOLIO

The Marvin portfolio consists of five product lines organized into three distinct collections defined by the degree of design detail and customization opportunities.

Marvin windows and doors offer exceptional performance, energy efficiency, low maintenance, and quality you can see, feel, and touch to help bring your vision to life.



ULTIMATE

Most extensive selection of features, options, and product types



MODERN

Design flexibility in a purely modern aesthetic available exclusively at Marvin Modern dealers



COASTLINE

Custom windows and doors for high velocity hurricane zones in the coastal Southeast



ELEVATE

Wide range of options and product types



ESSENTIAL

Curated options and product types

MARVIN SIGNATURE® COLLECTION

MARVIN ELEVATE® COLLECTION

MARVIN ESSENTIAL™ COLLECTION

INTERIORS	WOOD 6 species options + custom 2 painted or primed options 6 stains + clear coat	EXTRUDED ALUMINUM 5 color options	EXTRUDED ALUMINUM 6 solid colors, 4 woodgrain finishes	WOOD Bare pine, painted Designer Black, painted White, or clear coat	FIBERGLASS 3 color options
EXTERIORS	EXTRUDED ALUMINUM 19 colors + custom OR WOOD 3 species + custom	FIBERGLASS 5 color options	EXTRUDED ALUMINUM 6 solid colors, 4 woodgrain finishes	FIBERGLASS 5 color options	FIBERGLASS 5 color options
SIZING	Standard + custom sizing for replacement, remodeling, or new construction	Custom sizing for remodeling or new construction	Custom sizing for replacement, remodeling, or new construction	Standard + custom sizing for replacement, remodeling, or new construction	Standard + custom sizing for replacement, remodeling, or new construction
HARDWARE	Extensive selection including Marvin Gallery Hardware	Minimalist hardware for modern design aesthetic	Available in multiple styles, sizes, and finishes to complement the window + door aesthetics	Available in 6 finish options with 2 door handle styles	Available in 6 finish options with 1 door handle style
COASTAL + WATERFRONT	Hurricane Impact Zones 3 and 4, + PG 50 Products		All products rated for High Velocity Hurricane Zone (IZ4)	Hurricane Impact Zone 3, + PG 50 Products	

Marvin Essential collection

DESIGN AND PERFORMANCE MADE EASIER

Characterized by clean lines, powerful performance, and streamlined options, the Marvin Essential collection makes it easier to achieve design and quality. The Essential collection features durable Ultrex® fiberglass interiors and exteriors, making it virtually maintenance free.

About Us

At Marvin, we're driven to imagine and create better ways of living, helping people feel happier and healthier inside their homes. We believe that our work isn't just about designing better windows and doors—it's about opening new possibilities for the people who use them.



Casement, Picture, and Awning windows in Ebony



Direct Glaze windows in Ebony

TABLE OF CONTENTS

5	MARVIN ESSENTIAL COLLECTION
8	WHY MATERIALS MATTER
10	ENERGY EFFICIENCY
12	DESIGNED WITH PROS IN MIND
14	WINDOWS + DOORS
16	CASEMENT + AWNING
18	SINGLE HUNG
20	DOUBLE HUNG
22	GLIDER
24	PICTURE
26	ROUND TOP + SPECIALTY SHAPES
28	SLIDING PATIO DOOR
30	PRODUCT OPTIONS
32	INSTALLATION ACCESSORIES
33	EXTERIOR TRIM
34	DESIGN OPTIONS
36	HARDWARE STYLES

WHY MATERIALS MATTER

THE MARVIN MATERIALS DIFFERENCE: ULTREX® FIBERGLASS

Choosing the right materials for windows and doors is important when it comes to long-term appearance and performance. Ultrex, an innovative fiberglass material pioneered by Marvin over 25 years ago, was one of the first premium composites on the market. However, not all composites are created equal.

Some companies use materials with fundamentally different properties and performance values to produce a composite material. Ultrex is different. High-density woven fibers bound by a thermally set resin makes Ultrex more resistant to pressure and temperature than vinyl-based composites. With such different materials grouped in the composites category, it is essential to know what sets them apart.



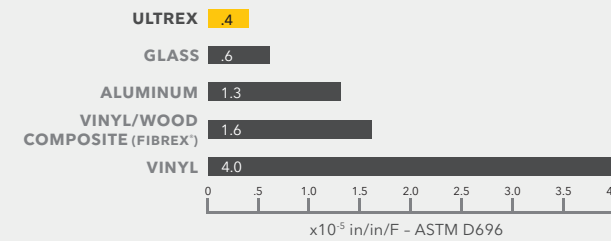
TEMPERATURES MAY FLUCTUATE, BUT ULTREX® FIBERGLASS WON'T

Ultrex expands and contracts at virtually the same rate as glass, so it works with glass rather than against it. This means seals aren't as prone to leaking, and windows aren't subjected to sagging issues like other composites.

This is especially true when compared to vinyl, which can distort in extreme heat and crack in fluctuating temperatures. Ultrex resists distortion even at temperatures up to 285°F. Rapid temperature change doesn't faze Ultrex. From -30°F to 70°F, a 6-foot stile changes less than 1/32 inch in length.

EXPANSION MEASUREMENT

Ultrex expands and contracts at virtually the same rate as glass.

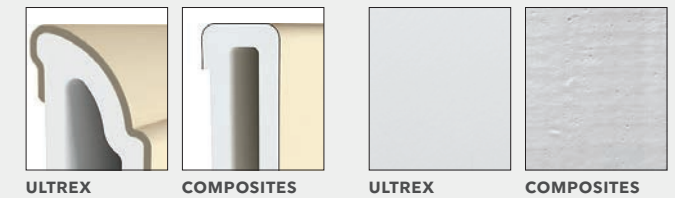


INDUSTRY'S BEST FIBERGLASS FINISH FOR LASTING BEAUTY

Ultrex is the first and only fiberglass finish to be verified to AAMA's 624 voluntary finish specifications for fiber-reinforced thermoset profiles (fiberglass).

Windows and doors made with Ultrex resist scratches, dings, and marring more than vinyl. Our proprietary, mechanically bonded acrylic finish is up to three times thicker than painted competitive finishes, and it resists UV degradation up to five times longer than vinyl—even on dark colors.

ACRYLIC CAP



STRENGTH AND STABILITY OF ULTREX

Ultrex pultruded fiberglass has a tensile strength 8x stronger than vinyl and 3x stronger than non-fiberglass vinyl/wood composites. Windows and doors made with Ultrex bend and flex less, resist cracking and separating, and stand up better to everyday wear and tear.

The exceptional strength and stability of Ultrex eases installation and establishes a secure, long-lasting fit that stays square and true year after year.

PULTRUDED FIBERGLASS

Thin strands of strong glass cables saturated with compounded resins create a durable material.

DURABLE FINISH

The proprietary finishing process applies a durable, long-lasting AAMA 624 verified factory finish.



Double Hung windows in Stone White

COOLER IN SUMMER, WARMER IN WINTER

TOP RATED ENERGY EFFICIENCY

The National Fenestration Rating Council (NFRC) defines energy performance ratings for the entire window and door industry. It rates:

- **U-factor:** How well a window keeps heat inside a building.
- **Solar heat gain:** A window's ability to block warming caused by sunlight.
- **Visible light transmittance:** How much light gets through a product.
- **Air leakage:** Heat loss and gain by air infiltration through cracks in the window assembly.

Ultrax® fiberglass is 500 times less conductive than roll-form aluminum, similar to wood and PVC. It provides an insulated barrier against extreme weather temperatures, keeping homes comfortable and reducing heating and cooling costs.

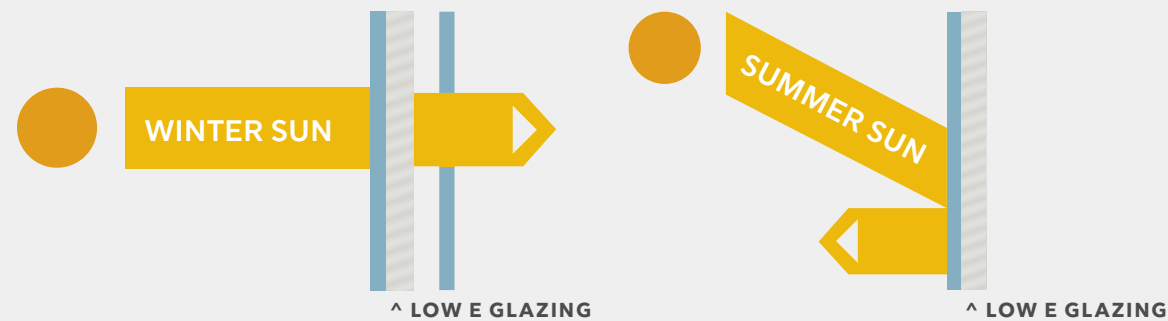
ENERGY COST SAVINGS

Marvin was the first major window and door manufacturer to offer energy-efficient Low E2 glass and ENERGY STAR® certified performance on all of our standard windows and doors. Compared to non-certified products, ENERGY STAR certified windows and doors cut heating and cooling costs by 12%.*

The Essential collection offers Low E1, Low E2, Low E3, and Low E3/ERS insulated glass with argon gas, which has thermal conductivity 30% lower than that of air. It adds improved solar and thermal protection by distinguishing between visible light, damaging UV, and near-infrared rays to offer the ultimate glass performance. In addition, it provides a selection of energy-efficient solutions depending on your climate and needs.

LOW E GLASS COATING

The Low E coating is specially designed to take advantage of the angle of the winter and summer sun. Winter sun is absorbed and conducted indoors. Summer sun is filtered and reflected back outdoors.



Double Hung windows in Stone White

A MORE COMFORTABLE INTERIOR, REGARDLESS OF THE SEASON

Keep heat inside during cooler weather and block the sun's rays during warmer weather with dual-pane windows and Low E coating.

DESIGNED WITH PROS IN MIND

PEACE OF MIND

Every project has its own unique requirements and Marvin is equipped to meet those challenges. Our unique Ultrex® fiberglass construction, available factory services, unmatched delivery, and network of dedicated service and support personnel make the Essential collection the perfect choice—no matter the project.

EASY TO ORDER, SIMPLE TO INSTALL

The Essential collection offers simplified options to make the order process straightforward. Installation options and accessories make installing Marvin easier than ever. See page 18 for more information.

MARVIN HAS YOU COVERED

The Essential collection is backed by a fully transferable 20/10 warranty—20-year coverage on glass, and 10-year coverage on manufacturing materials and workmanship.

CREATING VALUE AND EFFICIENCY EVERY STEP OF THE WAY

Weather-tight, solid, and durable Ultrex® fiberglass means there are virtually no call-backs. Essential window and door profiles are optimized for the maximum in performance and fit.



Double Hung window in Stone White

Marvin Essential collection

WINDOWS + DOORS

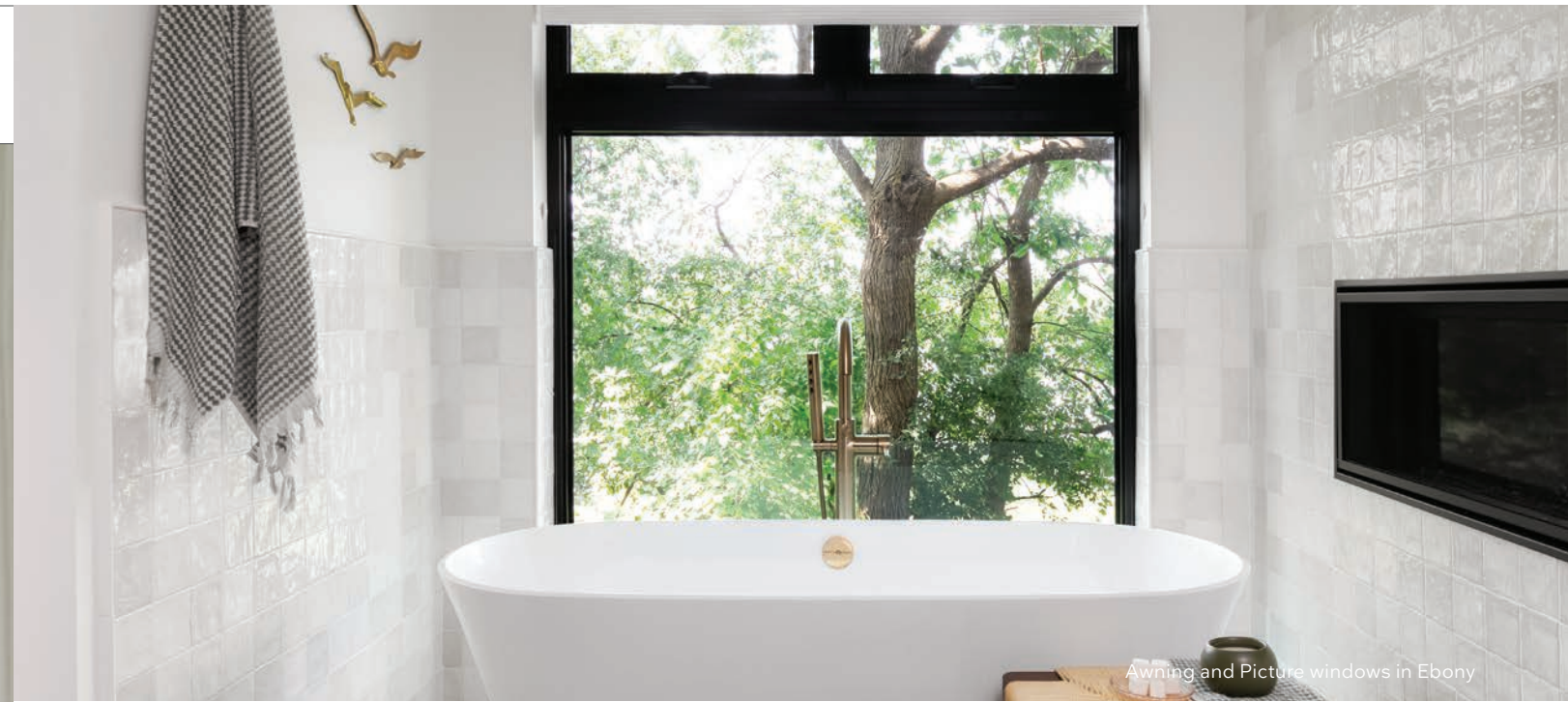


Essential Casement and Direct Glaze windows in Ebony and Elevate Sliding French door in Designer Black

CASEMENT + AWNING



Casement windows in Ebony with Matte Black hardware



Awning and Picture windows in Ebony

CASEMENT + AWNING

- Multi-point sequential locking system provides superior PG40 performance rating with single lever operation.
- Stationary, operating, Transom, and Picture units available.
- Folding handle provides easy operation and neatly stows out of the way of window treatments and blinds.
- Casement available in standard and special sizes up to 3 feet wide by 6 feet high.
- Awning available in standard and special sizes up to 4 feet wide by 3 feet high.
- Coordinating Picture and Transom windows available up to 6 feet wide by 6 feet high.
- Features an easy to remove screen with concealed fasteners.
- Crank out operation.



CASEMENT INTERIOR



AWNING INTERIOR



FOLDING HANDLE SHOWN IN OIL RUBBED BRONZE

SINGLE HUNG



Single Hung windows in Bronze



Ultimate Bi-Fold door and Essential Single Hung windows in Stone White

SINGLE HUNG

- Features a fixed top sash and a movable bottom sash for a traditional double hung look.
- Comes with a standard aluminum half screen; optional full screen is available.
- Lower sash lock provides a positive detent, reassuring user that the window is either locked or unlocked.
- Equal, Cottage, and Reverse Cottage sash provide a variety of looks and checkrail heights.
- Up to PG50 performance rating.
- Factory, reinforced, and field-mulling kits available.
- Standard and special sizes up to 4 feet wide by 6 feet 6 inches high.
- Coordinating Picture and Transom windows available in sizes up to 5 feet wide by 6 feet high.
- The lower sash removes easily with no strings or cords to detach.



INTERIOR



EXTERIOR



COTTAGE AND REVERSE COTTAGE SASH RATIO

DOUBLE HUNG



DOUBLE HUNG

- Two movable sashes with versatility to create ventilation at the top, bottom, or both.
- Equipped with a standard full screen; optional half screen is available.
- Tilt latches are ergonomically designed and easy to operate, making tilting and cleaning effortless.
- Up to PG50 performance rating on a majority of sizes.
- Equal, Cottage, and Reverse Cottage sash provide a variety of looks and checkrail heights.
- Factory, reinforced, and field-mulling kits available.
- Available in standard and special sizes up to 4 feet wide by 6 feet 6 inches high.
- Coordinating Picture and Transom windows available in sizes up to 5 feet wide by 6 feet high.



INTERIOR



EXTERIOR



TILT MODE FOR EASY CLEANING

Double Hung windows in Stone White

GLIDER



Glider and Picture windows in Ebony

GLIDER

- Perfect alternative to a swinging sash.
- Operating sash easily tilts and removes with no cords or strings to detach.
- Tilt latches are ergonomically designed and easy to operate, making tilting and cleaning effortless.
- Innovative screen design for easy installation and removal.
- Triple-sash option provides the appearance of a Picture window assembly.
- Available in dual-sash with left or right operating panel as well as triple-sash with fixed center panel and two operating end panels.
- PG25 performance rating on triple-sash and up to PG40 performance rating on dual-sash.
- Available in standard and special sizes up to 6 feet wide by 5 feet high for dual-sash and 8 feet wide by 5 feet high for triple-sash.



INTERIOR



EXTERIOR



GLIDER PULL SHOWN IN WHITE

Glider window in Ebony

PICTURE



Picture windows in Ebony



Picture windows in Ebony

PICTURE

- Fixed window available in either in-sash or direct glaze to meet various design needs.
- Direct glaze:
 - › Glass meets the frame directly without a sash for a simple, clean profile with more glass area.
 - › Available in sizes up to 9 ½ feet wide by 9 ½ feet high, not to exceed 49 square feet.
- In-sash:
 - › Designed to match profiles of operable windows in the Essential collection.
 - › Casement Picture windows available in sizes up to 6 feet wide by 6 feet high.
 - › Double Hung Picture windows available in sizes up to 5 feet wide by 6 feet high.



INTERIOR



EXTERIOR



INTERIOR WINDOW PROFILE SHOWN IN STONE WHITE

ROUND TOP + SPECIALTY SHAPES



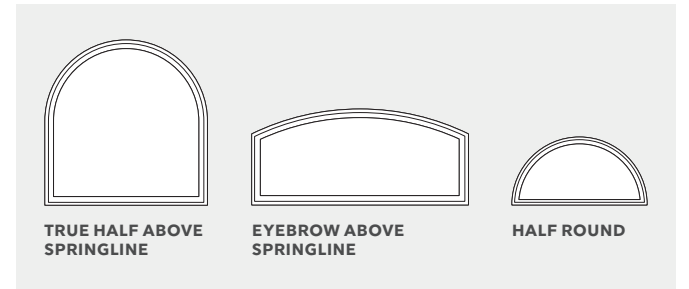
ROUND TOP

- Constructed of a glass reinforced composite capped with proprietary acrylic finish.
- Complements Ultrex® fiberglass performance and radius profile.
- Available nailing fin, installation bracket, and through jamb installation.

- Perforated folding radius nailing fin provides for simple installation and proper water management.
- Available factory and field-mulling options.
- Standard and special sizes up to 8 feet wide and up to 7 feet high depending on the shape.
- Up to PG50 performance rating.



EXTERIOR + INTERIOR



TRUE HALF ABOVE SPRINGLINE

EYEBROW ABOVE SPRINGLINE

HALF ROUND

SPECIALTY SHAPES

- Jambs are available factory applied or in an extension kit in 4 1/16 inch and 6 1/16 inch sizes.
- Consistent, fast delivery applies to even the most unique products.

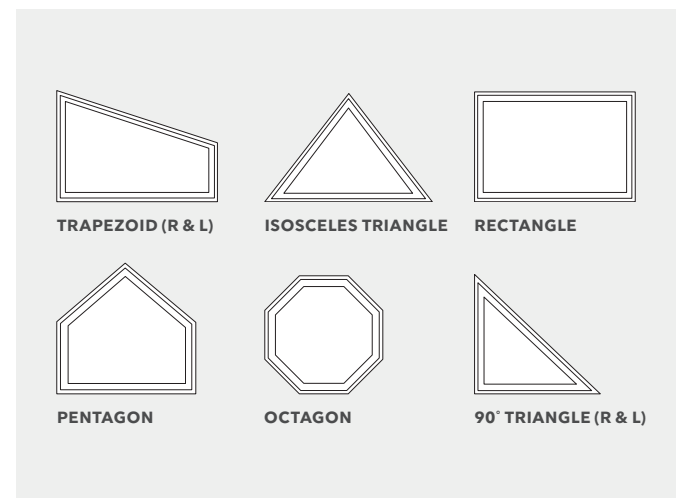
- PG50 performance rating.
- Factory, reinforced, and field-mulling kits available.
- Available in sizes up to 49 square feet. Longest leg may not exceed 9 1/2 feet.



INTERIOR PENTAGON



INTERIOR ISOSCELES TRIANGLE



TRAPEZOID (R & L)

ISOSCELES TRIANGLE

RECTANGLE

PENTAGON

OCTAGON

90° TRIANGLE (R & L)

SLIDING PATIO DOOR



Sliding Patio Door in Bronze with Matte Black Handle



Sliding Patio door in Ebony with Matte Black hardware

SLIDING PATIO DOOR

- A top hung sliding screen operates smoothly without jamming.
- Matching handle set design provides style and security.
- Optional slim handle provides 32-inch net clear opening on certain 2- and 3-panel configurations (see page 39).
- Special sizing available on 2-panel configurations.
- PG30 performance rating.
- Doors come with standard tempered Low E2 insulated glass with argon gas. Optional Low E1, Low E3, and Low E3/ERS meet diverse energy-efficiency needs.
- Available in standard and special sizes up to 6 feet wide by 8 feet high for 2-panel configurations, and 9 feet wide by 8 feet high for 3-panel configurations.
- Coordinating Transom windows available.



INTERIOR



EXTERIOR



SILL DETAIL SHOWN IN BRONZE

Marvin Essential collection

PRODUCT OPTIONS



Casement and Direct Glaze windows in Ebony

INSTALLATION MADE SIMPLE AND EFFICIENT

Marvin Essential windows and doors bring together design, quality, and performance in one streamlined collection. Essential products offer a number of installation options and accessories that make it easy to meet project demands.



NAILING FIN
Snaps out for easy installation.



CASEMENT/AWNING 3" SASH LIMITER
Permanently limits sash movement for safety and security.



JAMB EXTENSION
Allows for easy finishing with traditional molding and trim.



DOUBLE/SINGLE HUNG SASH LIMITER
Permanently limits sash movement for safety and security.



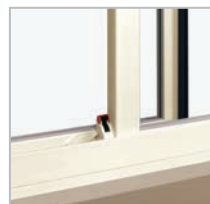
J-CHANNEL
Quickly and easily finishes the exterior.



NON-OPERABLE LOCK
Renders sash inoperable.



SHEETROCK RETURN
Accommodates 1/2"-5/8" drywall installations.



GLIDER WOOD
Limits opening to 4" while providing for full egress. ASTM F2090-10 compliant.



3/4" RECEIVER
Works with thicker installation methods, including box jamba.



CASEMENT WOOD
Limits opening to 4" while providing for full egress. ASTM F2090-10 compliant.



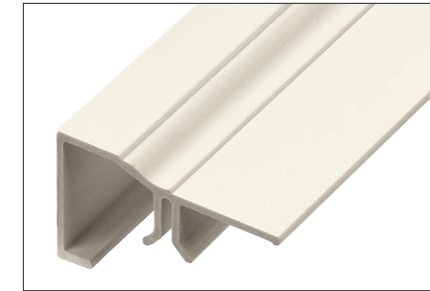
FRAME EXPANDER
Provides installation flexibility.



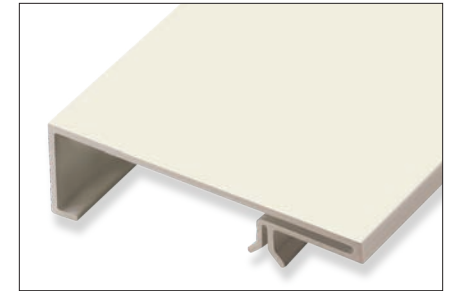
DOUBLE/SINGLE HUNG WOOD
Limits opening to 4" while providing for full egress. ASTM F2090-10 compliant.

EXTERIOR TRIM

Ultrex® Exterior Trim is offered with all rectangular Marvin Essential products in five exterior finishes. The durability, performance, and look of Essential collection windows and doors can be extended to the trim.

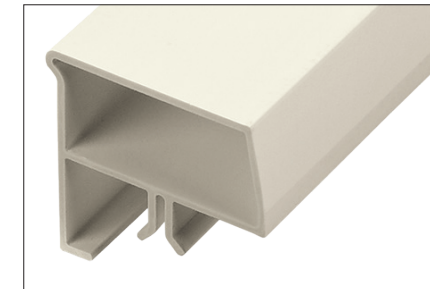


BRICK MOULD

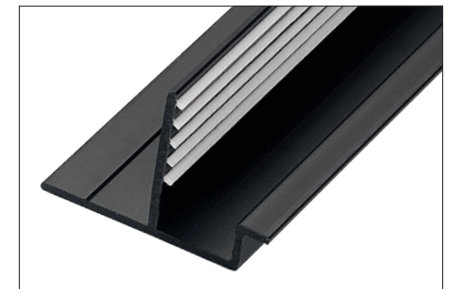


FLAT

BRICK MOULD
2" Brick Mould is available with or without 2 1/8" sill nosing.



SILL NOSE



CONNECTION BARB

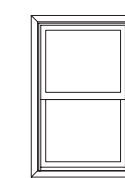
FLAT
3 1/2" Flat Trim is available in Flat and Flat Ranch configurations with or without 2 1/8" sill nosing.

SILL NOSE
2 1/8" Sill Nose provides authentic sill appearance.

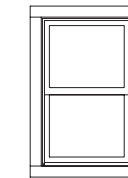
CONNECTION BARB
Barb and receiver attachment method provides for quick, secure installation.

TRIM CONFIGURATIONS

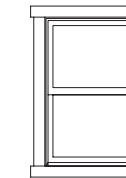
Multiple configurations are available in lineal lengths and factory pre-cut kits in all five Essential collection exterior colors.



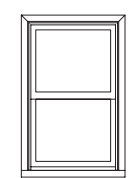
BRICK MOULD



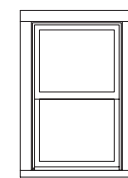
FLAT



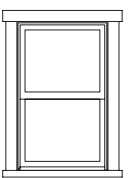
FLAT RANCH



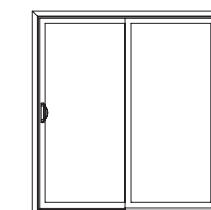
BRICK MOULD WITH SILL NOSE



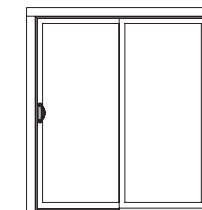
FLAT WITH SILL NOSE



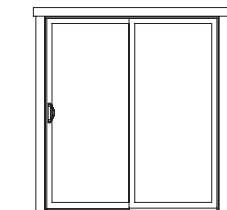
FLAT RANCH WITH SILL NOSE



BRICK MOULD*



FLAT*



FLAT RANCH*

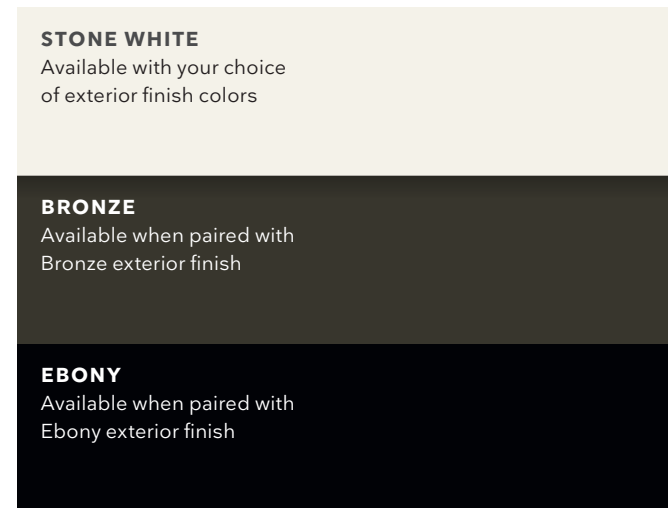
* Brick Mould, Flat, and Flat Ranch profiles are available on doors. Sill profiles are not included for door trim sets.

DESIGN OPTIONS

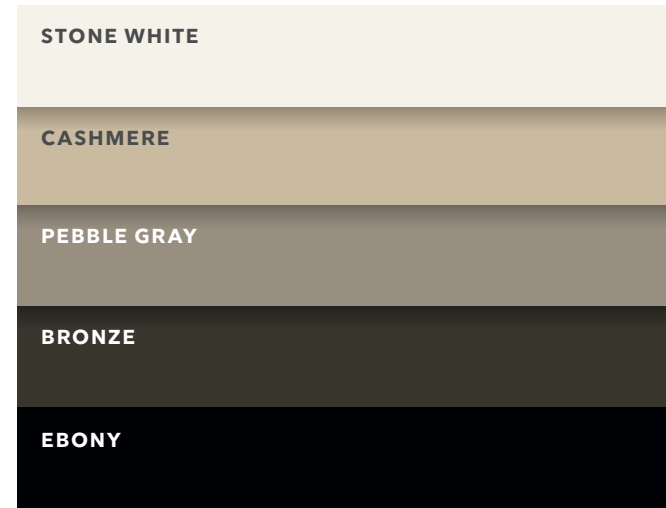
INTERIOR AND EXTERIOR FINISHES

Essential windows and doors have a durable, strong, and fully paintable Ultrex® fiberglass interior and exterior, featuring our AAMA-verified acrylic finish for low-maintenance and superior aesthetics.

FIBERGLASS INTERIOR COLORS



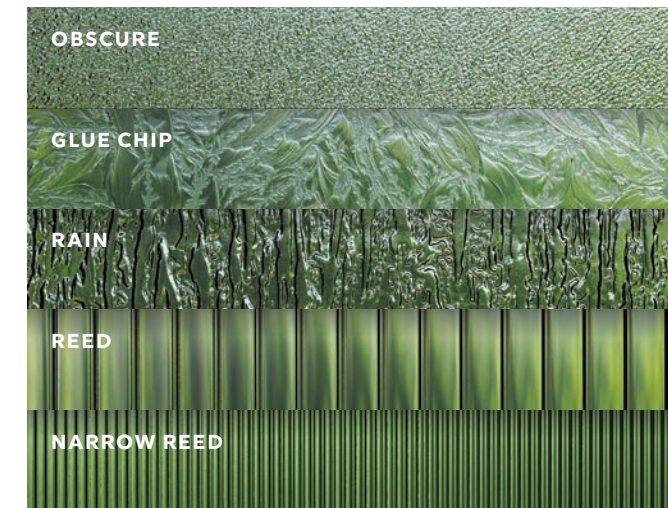
FIBERGLASS EXTERIOR COLORS



GLASS OPTIONS

Available in dual-pane in Low E1, Low E2, Low E3, and Low E3/ERS insulated glass with argon gas.* Options include glazing for sound abatement (STC/OITC), high altitudes, and California fire zones.

DECORATIVE GLASS



DIVIDED LITES

GRILLES-BETWEEN-THE-GLASS (GBG)

Available in several popular lite cut options for a classic divided lite look and easy glass cleaning. Available in Stone White, Bronze, and Ebony interior and Stone White, Cashmere, Pebble Gray, Bronze, or Ebony exterior.*



GRILLES-BETWEEN-THE-GLASS SHOWN IN STONE WHITE



Casement window with E2 glass

HARDWARE STYLES

WINDOW HARDWARE

Windows feature classic low-profile, durable hardware for clean aesthetics, safety, and security.



SASH LOCK + KEEPER
Double Hung, Single Hung, and Glider



FOLDING HANDLE
Casement and Awning

DOOR HANDLE

Sliding Patio Doors feature classic profile durable hardware, a perfect blend of safety and security.

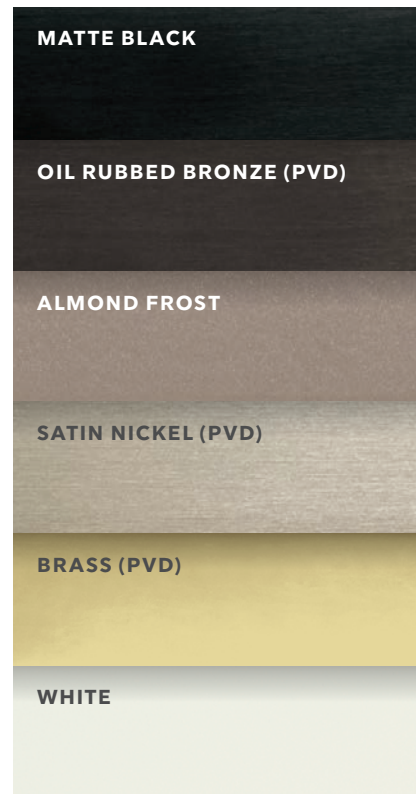


CAMBRIDGE

DOOR HANDLE OPTIONS

- Available keyed-alike option (use one key on multiple locks, with up to 3 different keys on each project).
- Choose a distinct interior and exterior handle finish that matches or complements the interior and exterior color of your door.

FINISHES



Double Hung window with Sash Lock and Sash Lift in Oil Rubbed Bronze



Essential Direct Glaze in Ebony and Ultimate Sliding Patio door in Designer Black

Choose from a variety of hardware finishes to complement your Essential collection windows and doors.

The Physical Vapor Deposition (PVD) process adds a layer of toughness to hardware exposed to environmental factors like direct sun and humidity. PVD finishes resist fading and discoloration, even in coastal areas. PVD has the highest grade corrosion resistant finish.

PVD finish is available on exterior door hardware in Oil Rubbed Bronze, Satin Nickel, and Brass.



Sliding Patio door with Cambridge hardware in Matte Black

Photo: Brett Youngberg

THE MARVIN ESSENTIAL COLLECTION
BRINGS TOGETHER DESIGN, QUALITY,
AND PERFORMANCE IN ONE
STREAMLINED OFFERING.

Strong, durable Ultrex® fiberglass exteriors and interiors are both striking and virtually maintenance free. Simplified options make the order process straightforward, while clean lines and versatile styles make it easy to meet project demands.





Since we opened as a family-owned and -operated lumber and cedar company in 1912, Marvin has designed products to help people live better. We remain committed to bringing beauty and simplicity into people's lives with windows and doors that stand the test of time.

MARVIN.COM

©2022 Marvin Lumber and Cedar Co., LLC. All rights reserved.
®Registered trademark of Marvin Lumber and Cedar Co., LLC.
ENERGY STAR® and the ENERGY STAR certification mark are registered US marks. Printed at Quantum.

Part #19981901. October 2022.

Colors shown in printed materials are simulations and may not precisely duplicate product or finish colors. Contact your local Marvin dealer to view actual product and finish color samples.